



txPER[®]

Quick Installation Guide

Transcorder HD

www.telexper.com

1

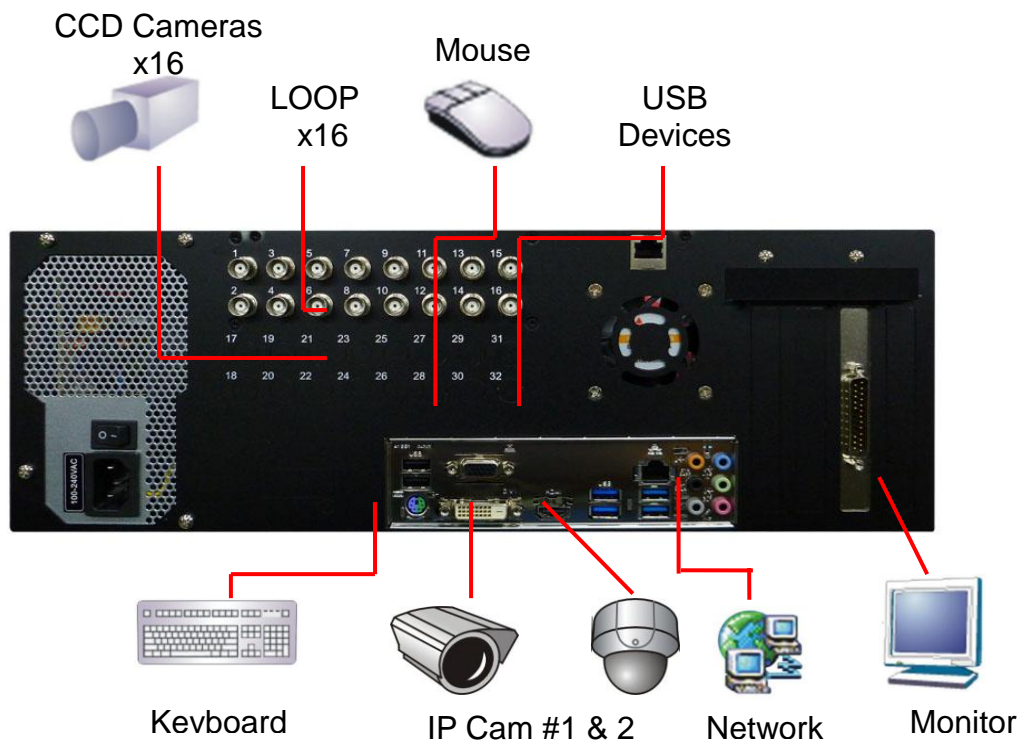
Quick Installation Guide

● Commander Station:

- Product Front View

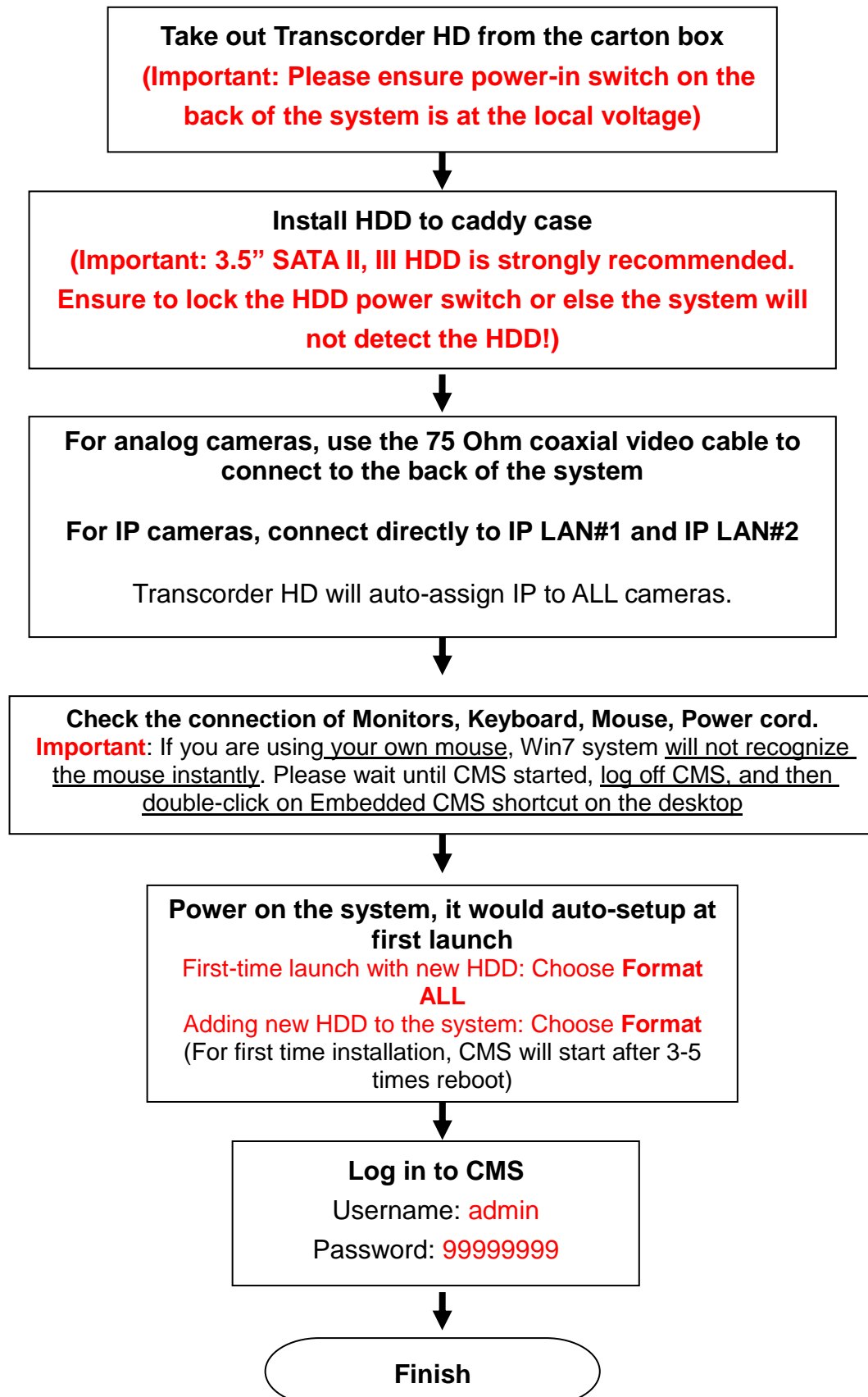


- Product Rear View



2

● System Setup Flow Chart



3

CMS Setup

● Log in to CMS

Default Username: **admin**

Default Password: **99999999**

● Main Menu (Live Mode)

The screenshot displays the Central Management System (CMS) interface in Live Mode. The interface is divided into several sections:

- Top Bar:** Contains menu options: Playback, Log, Setup, Exit. On the right, it shows the current date and time: 2019/3/05 22:25:13.
- Main Grid:** A 4x4 grid of camera feeds. Most feeds are labeled "LIVE". One feed in the bottom row is labeled "REC" (Recording). Camera names are visible at the bottom of each feed, such as "HY-01(1)", "HY-02(2)", "HY-03(3)", "HY-04(4)", "HY-05(5)", "HY-06(6)", "HY-07(7)", "HY-08(8)", "HY-09(9)", "HY-10(10)", "HY-11(11)", "HY-12(12)", "HY-13(13)", "HY-14(14)", "HY-15(15)", "HY-16(16)", "RD門口(37)", "3516C-SSL(35)", "RD門口(37)", "3516-094(陽台)(101)", "3516-0F1(中庭)(102)", "辦公室大門(103)", "3516D-49BA(108)", "RD入口(108)", and "走廊(109)".
- Left Sidebar:**
 - Main Menu Buttons:** A list of camera IDs from HY-03(3) to HY-16(16), and RD門口(37).
 - Devices Directory:** A list of camera IDs from HY-01(1) to HY-16(16), and RD門口(37).
 - Control Status:** A list of control options: -Audio In, -Audio Out, -PTZ, -Alarm In, -Alarm Out.
 - Sequence Buttons:** A list of sequence options: Sequence, Sort by Name, POS, Connections.
- Annotations:** Several callout boxes provide additional information:
 - Current Date & Time:** Points to the top right corner.
 - Screen Display:** Lists camera IDs: (4/6/8/9/10/12/13/16/19/20/25/36/49/64).
 - Status:** Shows "-LIVE" and "-REC".
 - Camera Name:** Points to the bottom of a camera feed.

Main Menu Buttons Overview

Playback

Playback: Switch to playback mode, please refer to Playback Mode chapter.

Log

View Log: Open the log of System and Alarm list.

Setup

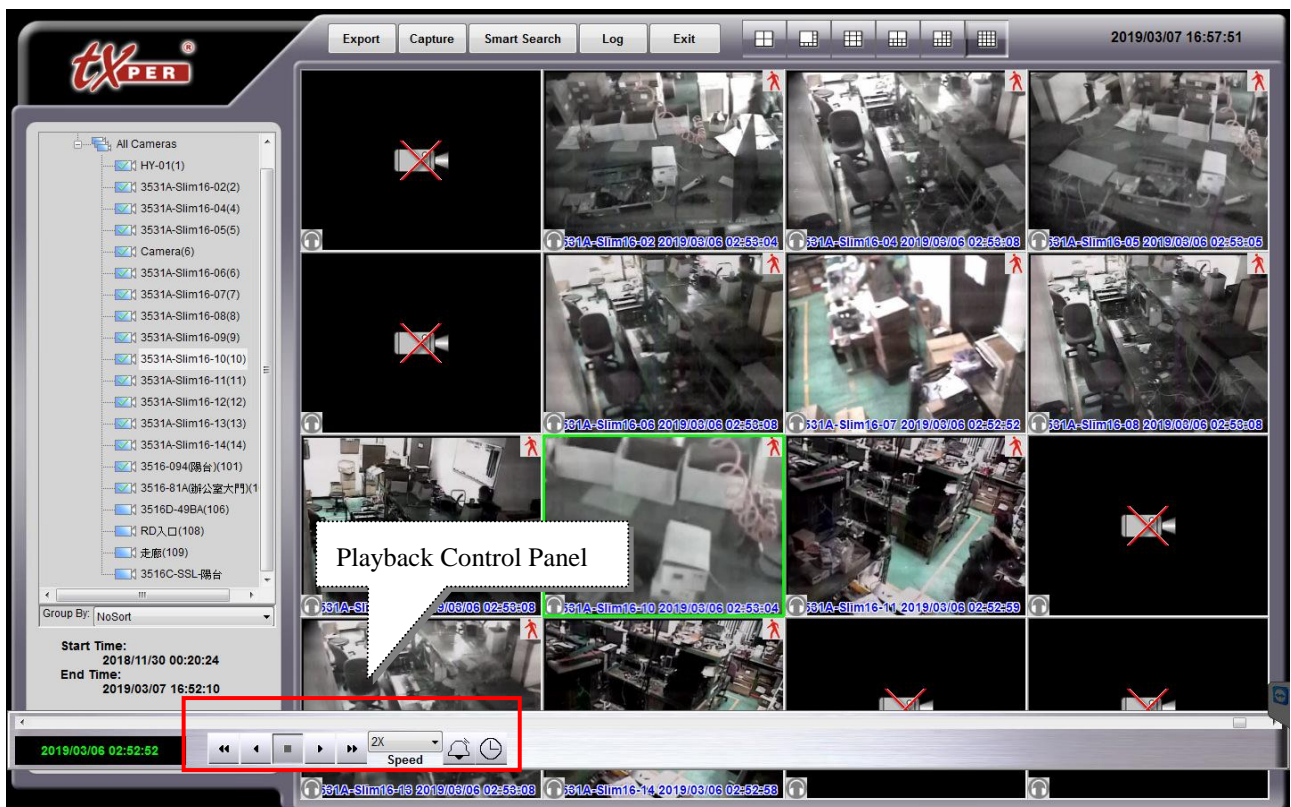
Setup: Switch to the CMS Setup page. Please refer to the **CMS Setup** chapter.

Exit

Exit: Log off CMS or exit CMS.

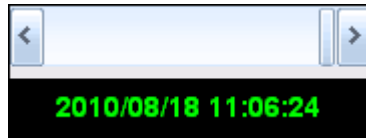
● Enter Playback Mode


1. Please ensure all cameras are in the REC mode. For setting up recording schedule, please go to **Setup, Recording Schedule**.
2. On the Live menu, select **Playback** to enter playback mode.



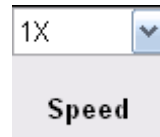
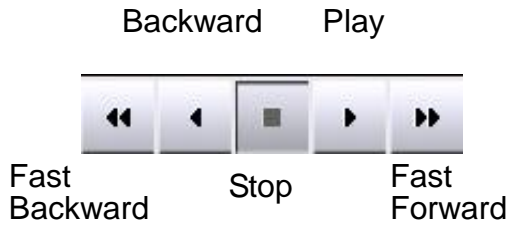
5

Scroll the **Play Control Bar**



to the desired time, and click  to

play the footage.

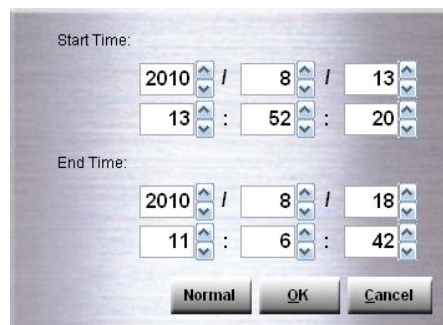


Click on the play speed bar to adjust the speed (1X, 2X, 4X, 8X) of playing the footage.

● Time Search Playback

1. Click **Time Search** button .

2. User can input the desired start time, or click **Advance** to setup a time range to search



3. Click **OK** to start.

6

● AVI Export

1. Click  button, and key in time range.



2. Select the cameras.
3. Select export format: Standard AVI or Private VDO.

Standard AVI video can be played by Windows Media Player that supports H.264 format.

Private VDO video requires CMS Player to view. Windows Media Player does not support Private VDO video.

4. Then select the directory where you want to save the exported files (Hard Drive, CD or DVD)
5. Check **Export Player** to export CMS LX Player in order to watch video in Private VDO format.
6. Click **Start** to execute the command.
7. When the “Finished” is showed on the status bar, then, the AVI export is completed.
8. Then click the “exit” to leave the AVI Export

● Other CMS Operations

For more information regarding Central Management Software operations, please refer to the complete CMS user manual.