



Quick Operation Guide

Remote CMS.Net Software

www.telexper.com

1

System Requirements for RemoteCMS

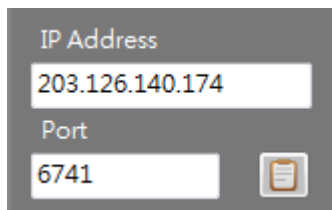
Recommend Hardware Specifications	
Operating System	Windows 7, or above
CPU	Intel i7
RAM	4G
VGA	NVIDIA N210 or above
Minimum size for software application installation	300MB

Getting Started

1. Login RemoteCMS

Double-click the RemoteCMS  icon to begin the software.

2. Connect



The screenshot shows a connection dialog box with two input fields. The first field is labeled 'IP Address' and contains the text '203.126.140.174'. The second field is labeled 'Port' and contains the text '6741'. To the right of the 'Port' field is a small icon of a document with a checkmark.

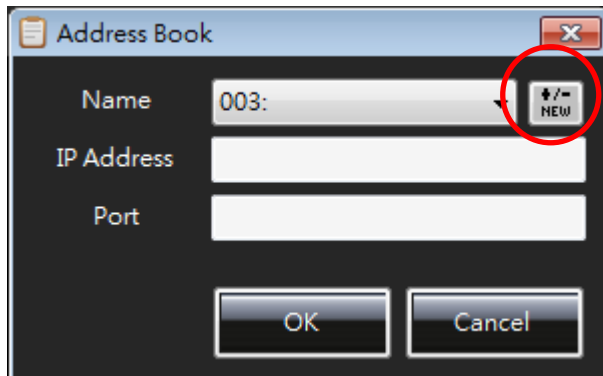
Input the IP address of the server which you want to connect. The default port is 6741.

Address Book

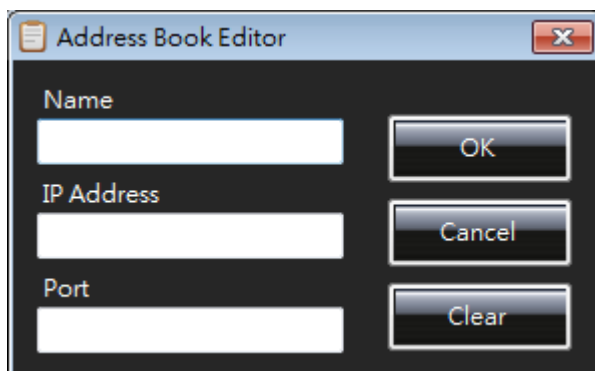
You can save multiple CMS server IP addresses (up to 512 entries) to the Address Book.

To save IP address:

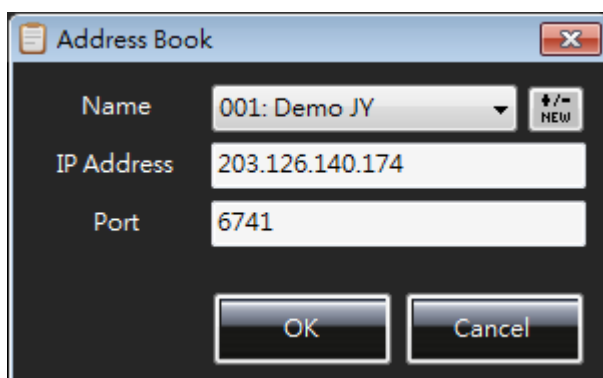
1. Scroll down address entries (1-512) and select one entry #, and then click **+/-New**.



2. Create a name for the CMS server, input IP address and Port for the CMS Server. (See above instructions).



3. Click **OK** to save the entry.
4. Click **OK** to connect.



3

5. In the future, you may go to the **Address Book** and simply connect to previous saved CMS without inputting the information again on the main menu.

Connect



After inputting CMS IP address or selecting a site from the Address Book, press the Connect icon to login.

Then, there will be a window pop-up. Insert Username and Password to sign in.





Default Username: admin
Default Password: 99999999

Display Mode



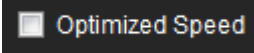
You could change the LIVE screen display to 1 / 4 / 9 / 16 /19 screen display mode.

You may double-click on the selected camera to switch to full screen.

Click   to maximize the window or resize the window.

Live Viewing at Optimized Speed

This function is particularly for limited network environment. On the upper right hand corner of

the main screen, you may check  to optimize viewing speed.

4

Live Mode

Live Mode allows you to connect to the CMS server remotely. You may control the PTZ or I/O function on the cameras. .






You could also right click the mouse button on the channel to open the TTL and PTZ control. It will allow you to open the device like alarm, light, etc,

Snapshot

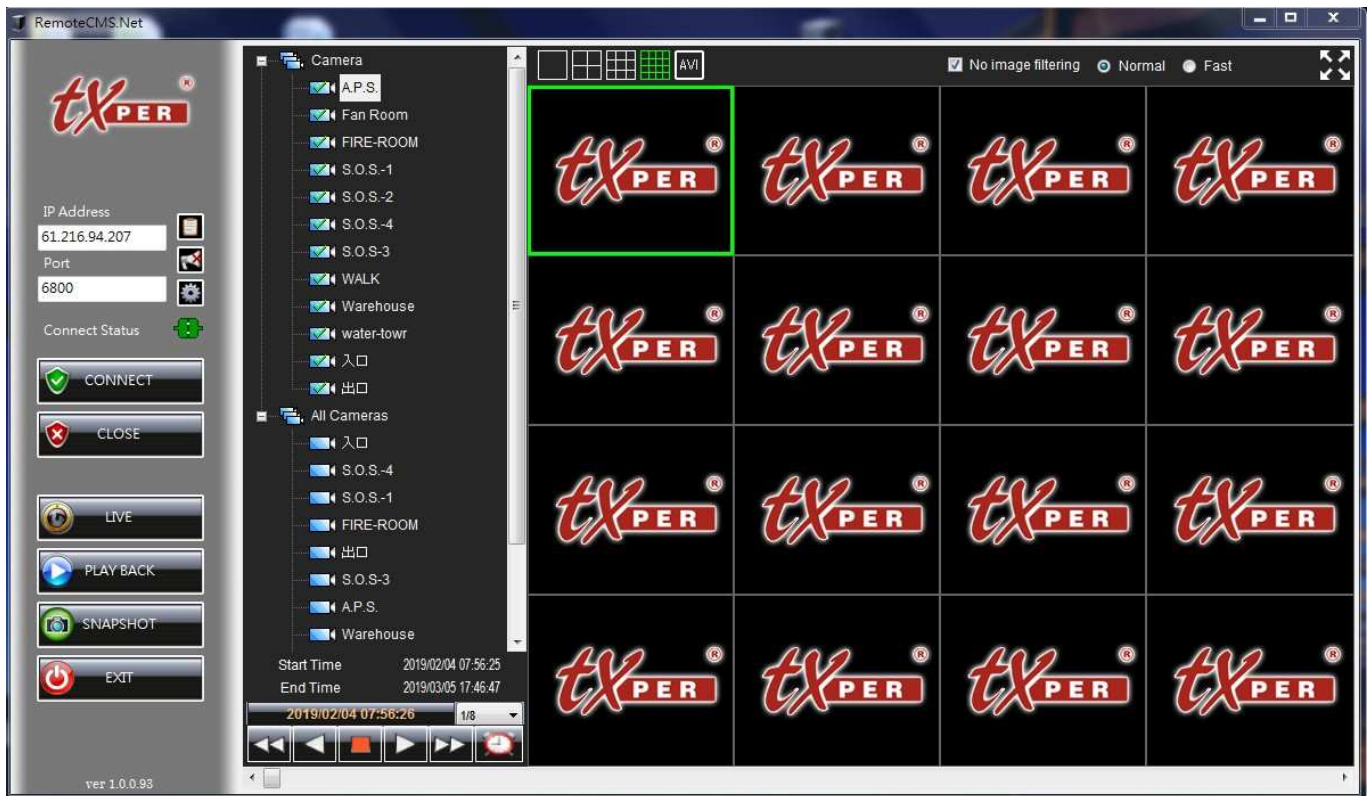
Click the Icon can snapshot the current channel.

AVI

You may AVI export LIVE video on the cameras you currently are viewing. Select the location where you want to save the videos and it will start recording locally. The AVI icon will turn green . Simply click on the AVI icon  to stop the recording. The AVI icon then will return to .

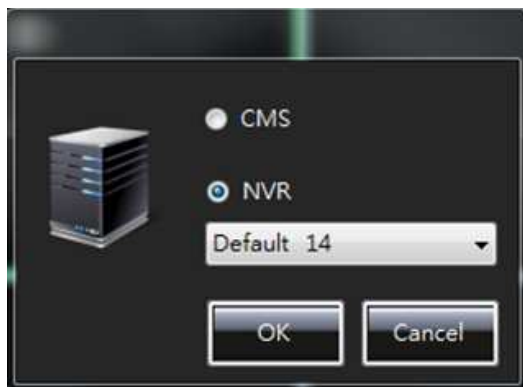
5

Playback Mode

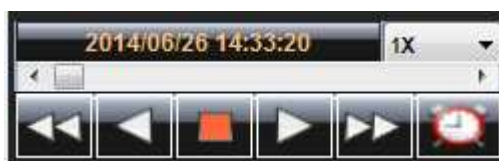


1. Please click  to enter the playback mode.

2. Select NVR records.

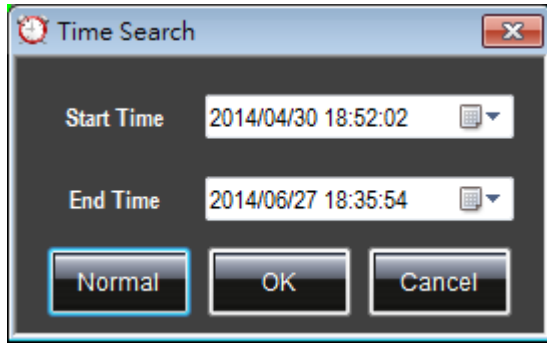


3. Select the date/time of the recorded video/audio by clicking the scrolling arrow.

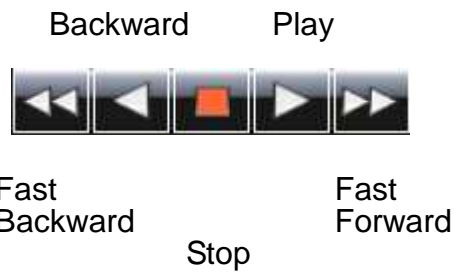


4. Or you may do Time Search by clicking 




6



Playback Control



AVI

You may do AVI export on the cameras you are viewing. Select the location where you want to save the videos and it will start exporting. The AVI icon will turn green . Simply click on the AVI icon  to stop the recording. The AVI icon then will return to .

Note: Before going AVI export, please select the video quality you wish to export.