

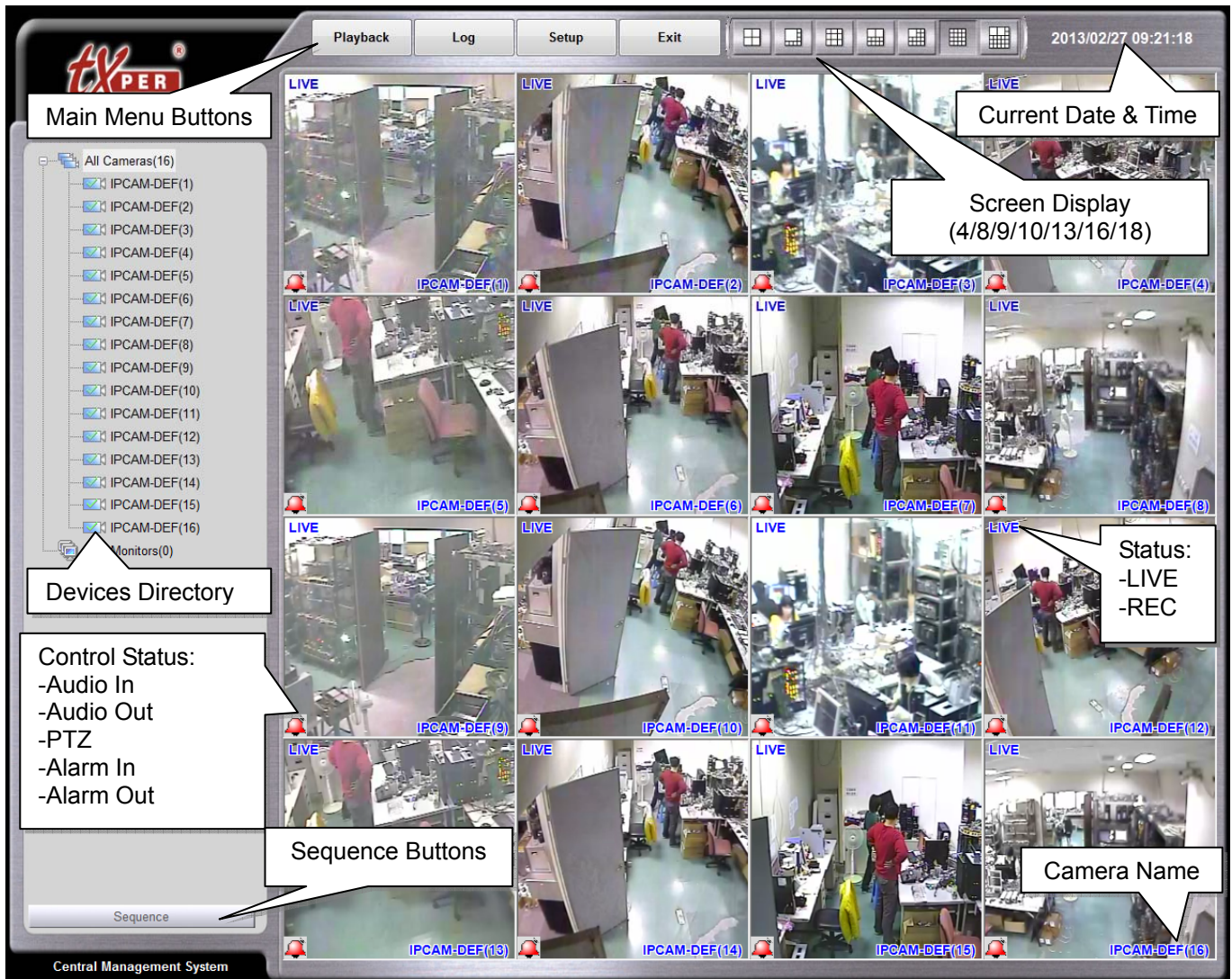


txPER[®]

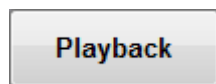
Quick User Guide
Central Management Software

www.telexper.com

● CMS - Main Menu (Live Mode)



Main Menu Buttons Overview



Playback

Playback: Switch to playback mode, please refer to Playback Mode chapter.



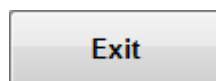
Log

View Log: Open the log of System and Alarm list.



Setup

Setup: Switch to the CMS Setup page. Please refer to the **CMS Setup** chapter.



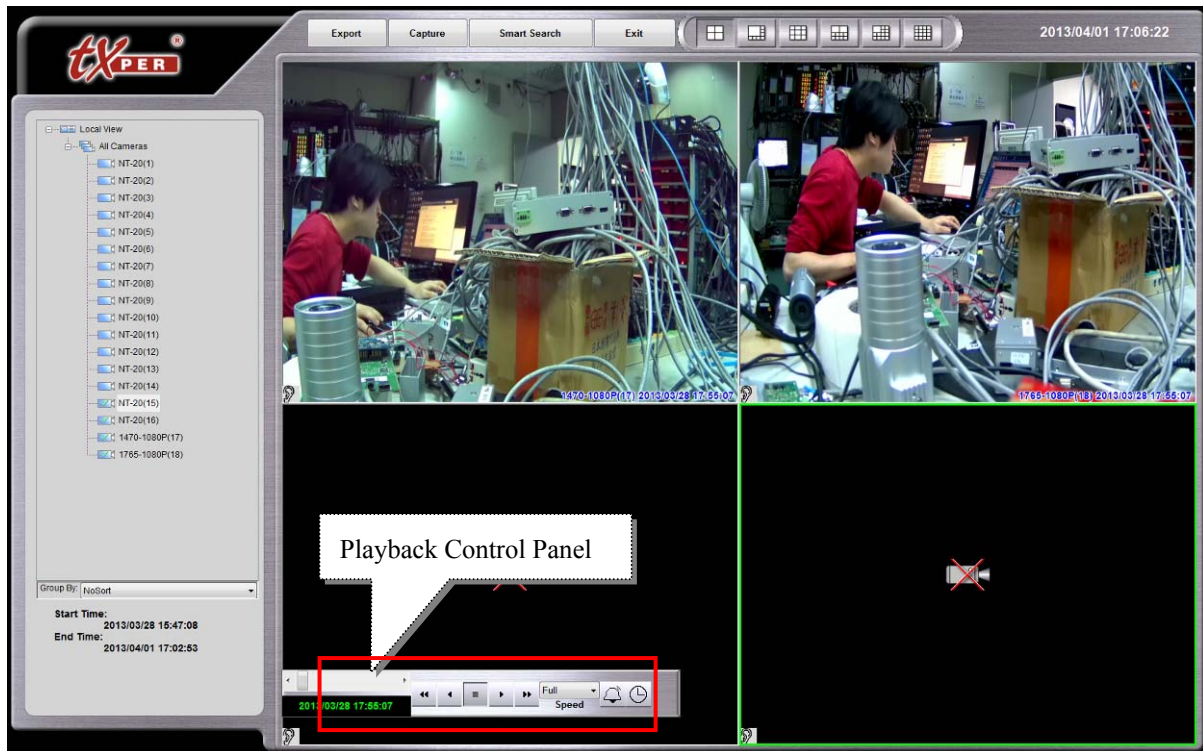
Exit

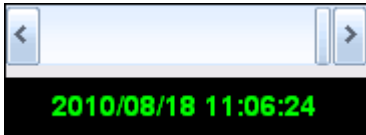
Exit: Log off CMS or exit CMS.


Enter Playback Mode

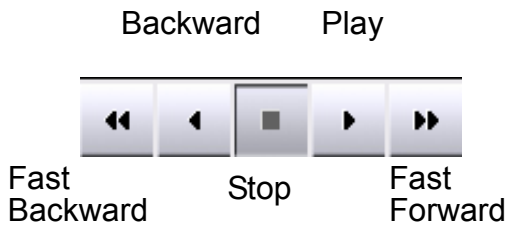
1. Please ensure all cameras are in the REC mode. For setting up recording schedule, please go to **Setup, Recording Schedule**.

2. On the Live menu, select **Playback** to enter playback mode.



3. Scroll the **Play Control Bar**  to the desired time, and click

 to play the footage.

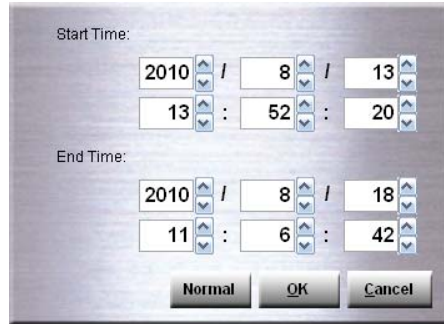


Click on the play speed bar to adjust the speed (1X, 2X, 4X, 8X, 16X, 64X) of playing the footage.

Time Search Playback

1. Click **Time Search** button .

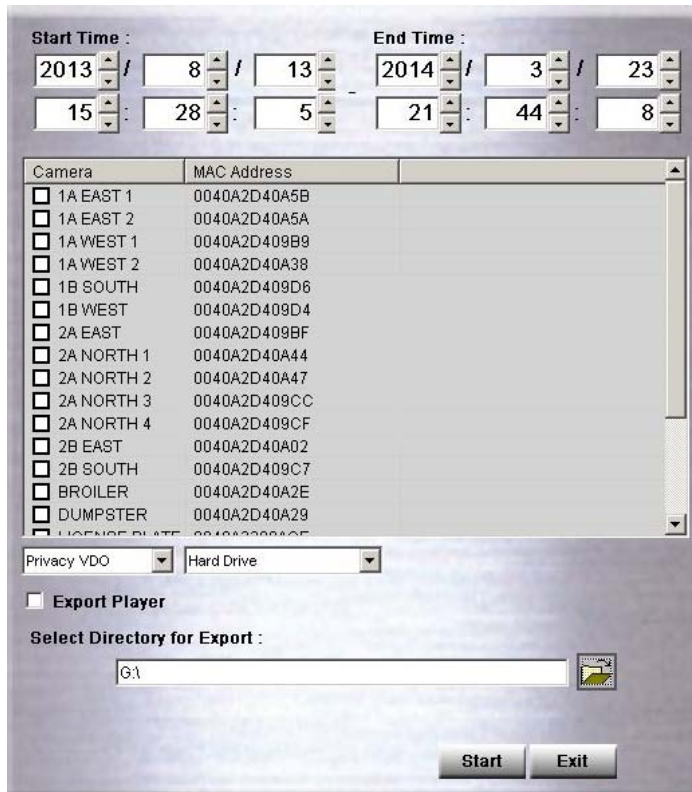
2. User can input the desired start time, or click **Advance** to setup a time range to search



3. Click **OK** to start.

AVI Export

1. Click **Export** button, and key in time range.



2. Select the cameras.

3. Select export format: Standard AVI or Private VDO.
 - Standard AVI video can be played by Windows Media Player that supports H.264 format.
 - Private VDO video requires CMS LX Player to view. Windows Media Player does not support Private VDO video.
4. Then select the directory where you want to save the exported files (Hard Drive, CD or DVD)
5. Check **Export Player** to export CMS LX Player in order to watch video in Private VDO format.
6. Click "**Start**" to execute the command.
7. When the "Finished" is showed on the status bar, then, the AVI export is completed.
8. Then click the "exit" to leave the AVI Export

Other CMS Operations

For more information regarding Central Management Software operations, please refer to the complete CMS user manual.