

3i CCTV

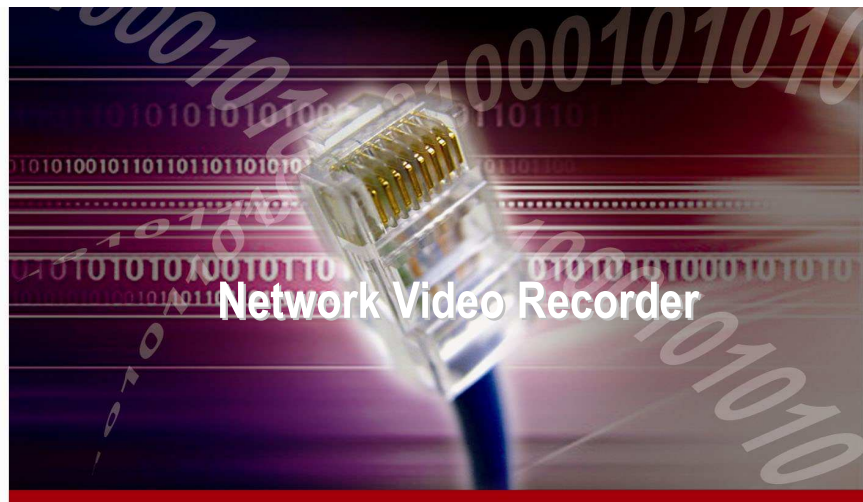
iP, integration, intelligent



nVR-4



nVR-8



Network Video Recorder

Features:

- Embedded OS
- SATA I, SATA II Hard Drive (with Removable Caddy)
- Duplex Operation (REC & Playback Simultaneously)
- Auto Hard Drive Partition Allocation (APA)
- Automatic switch of the bad track of HDD without interrupting any recording
- Hard Drive Failure Notification via E-mail
- Compatible with VGA, D1, 1.3M, 2M Network Cameras
- TMSP¹ Protocol Protection Gives Security Data Leak FREE
- 19" 4U Rack Mountable Housing

High Storage Capacity:

Hard Drive Size	TTL Capacity (TeraByte)	
	nVR-4	nVR-8
1,000 GB	4.00	8.00
1,500 GB	6.00	12.00
2,000 GB	8.00	16.00

High Camera Capacity:

Video Resolution	Frame Rate (NTSC/PAL)	Number of Camera
		nVR-4 / nVR-8
VGA/D1	30/ 25	64
1.3Megapixel	15/ 12.5	64
2.0Megapixel	12/ 12	64

High Image Quality:

Video Resolution	Max Frame Rate (NTSC/ PAL)
	nVR-4, nVR-8 (NTSC/ PAL)
VGA/D1	1,920/ 1,600
1.3Megapixel	960/ 800
2.0Megapixel	768/768

Model no:

- nVR-4 x 4 Hard Disk
nVR-8 x 8 Hard Disk

Electrical:

- Operating System Windows Embedded OS
Video Format NTSC/ PAL
Video Type H.264/M-JPEG
CPU & Memory 64-bit CPU & 2G memory
Compatibility Cameras and Video Servers that support Standard RTSP
Network Interface 1,000Base-T (RJ45 x 1)
Protocol TCP/IP, TMSP¹
Hardware Watch Dog Built-in

Power

Requirement:

- Input Range 90 to 265 Vac, 47 to 63 Hz
Power Consumption 300 W (max)

Mechanical:

- Enclosure Metal Material
Dimension 445(L) x 430 (W) x 155 (H) mm
Weight 12 Kgs (without Hard Drive)

Environment:

- Operating 0 to 50°C, 10% to 80% R.H. (Non-condensing)
Storage (-)10 to (+) 70°C, 5% to 95% (non-condensing)

Approvals

CE, LVD, FCC, RoHs

Note 1:

TMSP: Telexper Multiple Stream Protocol